

**Imagine Tours and Travel**  
**509 W County Rd. 540A, Lakeland, FL 33813**  
 863.709.9208 info@ittworld.com  
 866.262.9507 www.ittworld.com

**We recommend travel insurance through Travel Guard.**

Please contact Travel Guard directly to purchase it at either

**1-800-826-5248** and reference agent code **127152**

or visit our website, **ittworld.com**, and click on **"Travel Insurance"** on the homepage.



**WISCONSIN**  
LUTHERAN COLLEGE

**THE FINE PRINT** ENROLLMENT IN AND PAYMENT OF YOUR DEPOSIT FOR THE TOUR, CONSTITUTES YOUR ACCEPTANCE OF THE CONDITIONS AND STATEMENT OF RESPONSIBILITY.

**INCLUDED IN PRICE:**

- Round-Trip Airfare** per brochure
- Deluxe Motor Coaches**
- Breakfast & Dinner Daily** per brochure
- Guided Sightseeing**
- Gratuities of \$185** Guides, drivers, hoteliers, etc.
- Entrance Fees** to sites visited
- First-Class Hotels**

Taxes and fuel charges totaling **\$595 USD** comprised of **\$264.60** for fuel charges ((subject to airline increase up to 30-days before departure) and \$330.40 for taxes (including U.S. federal inspection fees, airport taxes international air transportation tax, agricultural tax, other government-imposed fees such as the September 11th Security fee up to \$10 per person, passenger facility charges up to \$18 per person, federal domestic flight segment fees up to \$3.50 per segment and U.S. and International arrival and departure, and other government imposed fees up to \$300 per person).

**NOT INCLUDED IN PRICE:**

Passports, visas, vaccinations (if required), laundry, lunches not on the tour menu (food outside of the contracted menu will be billed prior to leaving the hotel or restaurant), excursions not listed, telephone/international data, mini-bar, alcohol, other beverages, airport transfers on non-qualifying flights, portage at airports, excess baggage fees, additional airline fees after registration, travel insurance, and all other items not explicitly mentioned.

**PAYMENTS & FEES:**

**A deposit of \$500 per person is due upon registration, with a second deposit of \$500 per person required within 21-days thereafter.**

Credit cards are only accepted for the initial \$500 deposit; subsequent payments must be in check, ACH transfer, bill payment, or wire transfer; **all payments are required in US Funds.**

**Final payment is due no later 120 days prior to departure.**

Registrations after 120-days require full payment and may incur a \$300 late fee if received 119-90-days before departure. **Failure to make final payment by 90-days prior to departure results in automatic cancellation, forfeiture of the \$500 deposit, and potential additional fees.**

Imagine Tours and Travel, LLC (hereafter referred to as *Imagine*) reserves the right to impose a surcharge if the dollar declines by more than 2% against the destination currency based on booking date (01/14/25).

**GROUP SIZE & SUPPLEMENTS:**

Tour pricing assumes a minimum group size of 20 passengers.

**Smaller groups may incur supplements:**

- \$150 per person (19-16 travelers)
- \$195 per person (15-12 travelers)

Tours with fewer than 12 travelers may be canceled due to insufficient participation.

**ACCOMMODATIONS:**

Price is based on double occupancy (two people sharing a room). Single rooms, when available, may be smaller and incur **an additional supplemental charge of \$850 for the basic itinerary.** Roommates are assigned if available; otherwise, single room occupancy may apply. *Roommates may be assigned as late as 120-days prior to departure when applicable.*

**ITINERARY & CHANGES:**

*Imagine* reserves the right to adjust itineraries due to airline schedule changes. Changes requiring extra nights incur \$195 per person per night (\$295 for single rooms). You will be notified in writing of said changes when possible. Meals for additional overnights are not included. Changes and/or deviations from the program and/or departure city listed by the passenger must be provided in writing no later than 120-days prior to departure.

**All deviations are subject to a \$250 administrative fee** plus applicable airline fees. **All tours are made final at 90-days prior to departure.**

**No changes (including additions) may be made after this time.**

**LAND ONLY:**

**Land Only price is \$4,387 per person, excluding international flights.**

Land Only passengers may be responsible for transfers and/or additional overnights incurred by booking their own flights. Passengers changing from the regular tour (with group airfare) to Land Only after 120-days prior to departure will be charged a fee of \$195 per person.

**AIRLINE TICKETS & SEATING:**

Flight routing is at the sole discretion of the airline, not *Imagine*. *Imagine* does not guarantee passengers will be on the most direct flight or flying together to the final destination (especially prior to 120-days of departure). Flights are economy class on IATA/ARC carriers with non-refundable, non-amendable tickets for groups of 10 or more. Due to group rates, *Imagine* does not participate or allow passengers to use points, miles, or other airline-related offerings on group contracted airfare. Seating requests are at the discretion

of the applicable airline and cannot be guaranteed. All requests, including seating, dietary restrictions, and/or all other accommodation must be made in writing prior to 120-days of departure. Airline changes, if allowable, made by the passenger after 120-days prior to departure will incur additional fees. Individual ticketing fees may apply in certain situations. **These fees can be up to \$2,000 per person and will be applied to your final balance.**

**FLIGHT TIMES:**

**All flight times are subject to change without notice. *Imagine* is not liable for expenses resulting from flight delays or changes.** If making your own flight arrangements to a departure city or any other portion of your trip, we recommend obtaining a ticket which can be changed without large penalties. All passengers are responsible for reconfirming their flights with the airline 24-hours prior to departure.

**PASSPORTS & VISAS:**

Passengers must ensure their **passports are valid for at least six months beyond the return date of their trip** and submit a valid passport copy to our office no later than 120-days prior to departure. Visa requirements vary by country, and it is each passenger's responsibility to obtain necessary visas prior to travel. ***Imagine* is not liable for obtaining any required travel visas.**

**TRIP RESCHEDULING:**

*Imagine* and/or the group leader/organization reserves the right to reschedule the trip to **future dates and/or a different destination** due to governmental action, pandemics, wars, or other circumstances beyond their control. Travelers unable to travel on the new dates or to the updated destination may transfer to another tour within one year of the original travel dates, subject to fees of up to \$300 per person, plus any applicable fees imposed by ground operators, airlines, or other vendors.

**CANCELLATION FEES:**

Passengers cancelling from the day of registration up to 121-days prior to departure **will be charged a \$500 administrative fee** plus any airline penalties, if applicable. If passenger cancellation forces a roommate into a single room, you may be charged their single room fee. **(see Accommodations)**

The following charges also apply: (plus airline fees, when applicable)

- \$1,500 (120 – 91-days)
- \$2,750 (90 – 75-days)
- **85% of total tour cost (74 – 60-days)**
- **100% of total tour cost (59-days to day of departure)**

**All cancellations must be submitted in writing. No refunds will be provided for unused services on or after the day of departure. We advise purchasing travel insurance.** In the event *Imagine* cancels the tour due to insufficient participation, a \$200 administrative fee per passenger will be deducted from any applicable refund, plus any airline penalties.

**Changes to the tour cannot be made within 90-days of departure, as the tour is considered closed at that time.**

**STATEMENT OF RESPONSIBILITY:**

*Imagine* and its associated companies agree to provide the itinerary as described in this brochure. This agreement constitutes the entire understanding between the passenger, their travel agent, the tour host, and the tour operator. All prices, itineraries, and schedules are subject to government regulations, international agreements, and airline tariff adjustments. *Imagine* reserves the right to refuse or revoke travel to anyone who, in the sole judgment of *Imagine*, is unable to participate in group travel. Except for willful negligence by its direct employees, the tour operator assumes no liability for injuries, inconveniences, illness, irregularities, or incidental damages caused by circumstances beyond its control, including but not limited to strikes, revolts, wars, natural disasters, pandemics, force majeure, airport or hotel closures, carrier defaults, negligence of third-party service providers, travel agents, or tour leaders/organizations. These conditions become a binding contract upon receipt and acceptance of your enrollment and payment to *Imagine*. Any disputes regarding this brochure or your tour will be governed by Florida law.

**RELEASE OF LIABILITY:**

By participating in this tour, you affirm your fitness to travel and acknowledge all associated risks to your safety and health. Travel inherently involves risks, especially in certain countries like Israel, where risks include terrorism, criminal acts, and health hazards. You voluntarily assume these risks and release *Imagine*, its officers, agents, and employees from all liability for:

- Any physical, mental, emotional, or other injuries sustained during the tour;
- Loss of or damage to property, illness, injury, delay, or death, regardless of cause, including negligence;
- Claims arising from strikes, armed conflicts, terrorism, acts of God, mechanical failures, diseases, local laws, governmental actions, criminal acts, weather conditions, volcanic eruptions, earthquakes, visa refusals, or other events beyond their control.

***Imagine Tours & Travel, LLC., is registered with the State of Florida as a Seller of Travel. Registration No. ST36635. Valid as of 01/14/25 AA/KM***

*The Cradle of Western Christianity In*

# ITALY

*Hosted by*

**WISCONSIN LUTHERAN COLLEGE  
 PROFESSOR JASON OAKLAND  
 & DR. WADE JOHNSTON**

Traveling

**MARCH 7 - 15, 2026**

Departures

**\$5,507 FROM CHICAGO, IL**

**PRICE INCLUDES**

US & Intl. departure taxes/fuel & gratuities

*Additional departure cities are available upon request.*

**EARLY BIRD SAVINGS**

off the total trip cost with your initial deposit of \$500.00!

**\$100 off if your payment is received by 03/05/25**

**\$75 off if your payment is received by 05/05/25**

**\$50 off if your payment is received by 07/05/25**

*Questions?* PLEASE CONTACT:

**Professor Jason Oakland**

@ jason.oakland@wlc.edu

**Dr. Wade Johnston**

@ wade.johnston@wlc.edu

Register Online: **RegisterNow.ittworld.com**

Tour Code: **Oakland26**

# The ITINERARY

**Day 1 – Saturday, March 7: Depart Chicago for Rome**  
Tour members depart on our flights for Rome. Sit-back, relax and enjoy the in-flight service as we make our way for Rome, Italy.

**Day 2 – Sunday, March 8: Arrival in Rome**  
We arrive at Rome Airport, and then we transfer to the hotel for check-in. Dinner and overnight are in Rome.

**Day 3 – Monday, March 9: Rome, Vatican Museums & St. Peter's Basilica, Abbey of Three Fountains, St. Paul Outside the Walls, Catacombs**  
After breakfast, we will begin a full day of sightseeing. First, we visit Vatican City where we will see St. Peter Basilica, the Sistine Chapel, and the Vatican Museums with stunning works of art at every turn. After some free time for lunch (not included), we visit the Catacombs where thousands of Christians were buried in a remarkable tiered series of galleries. We'll then stop at The Abbey of the Three Fountains, the traditional site of Paul's martyrdom and the ancient street that he walked on. We conclude our day at the Basilica of St. Paul Outside the Walls, the site of Paul's tomb. Dinner and overnight are in Rome.

**Day 4 – Tuesday, March 10: Forum, Colosseum, Mamertine Prison, Baroque Rome**  
After breakfast at the hotel, we begin our walking tour at the ancient Roman Forum, where our guide will divulge its secrets. We will visit the Arch of Titus which commemorated the sack of Jerusalem by Titus in AD 70. Next, we visit the Colosseum, where thousands of people and animals perished during gladiatorial games. The Colosseum first opened in AD 80 and within 100 days of its opening, 5000 wild beasts perished here. The slaughter of both humans and animals continued for three more centuries. Historians believe the Colosseum could hold between 40,000 and 80,000 people depending on how close the seating was. The floor has recently had a plank placed over the middle making it accessible for people to walk over the labyrinth of brick cells, ramps, and elevators used to transport animals and gladiators into the arena. Here we hear the stories of the games that have fascinated people for hundreds of years. We will continue our visit at the Mamertine Prison, where tradition says the Apostle Paul was imprisoned. The Roman church would say that Peter was imprisoned here as well, but there is no imperial evidence that Peter was ever in Rome. Then we will have free time for lunch (not included). In the afternoon, we will have a walking tour of the Baroque Rome: Trevi Fountain, Pantheon, Navona Square, and Spanish Steps. Dinner and overnight are in Rome.

**Day 5 – Wednesday, March 11: Rome, Assisi, Florence**  
After breakfast, we will say "Arrivederci Roma" and board our coach and travel through scenic Umbria to the ancient walled hillside village of Assisi. After lunch (not included), we will enjoy a guided tour of this beautiful,

medieval town, which will include the Basilica of Santa Chiara and the Basilica San Francesco, decorated with some of the most renowned frescoes in the world. The stories of the sacrificial life of St. Francis will be an encouragement to us all. Afterwards, we continue to the beautiful city of Florence, the heart of charming Tuscany. Here we will check-in to our hotel for dinner and overnight.

**Day 6 – Thursday, March 12: Florence City Tour**  
After breakfast, we enjoy a guided tour of Florence, one of the world's greatest artistic capitals. We will see (from the outside): Piazza della Signoria, Duomo, and Baptistry. A stop will also be made on the hillside overlook across the river from Florence where we will enjoy a panoramic view of the beautiful, red-tiled roof cityscape. This afternoon is at leisure to enjoy shopping, visiting more galleries, or strolling on the famous Ponte Vecchio, the old bridge which spans the Arno River, or it may be the time to purchase those special gifts. We suggest an optional visit to the Accademia Gallery, home of Michelangelo's David. Dinner and overnight are in Florence.

**Day 7 – Friday, March 13: Florence, Pisa, Venice Mestre/ Marcon**  
This morning we check out of our hotel and begin our sightseeing with a tour of Pisa where we will see (from the outside) the Baptistry, Duomo, and the famous leaning tower in the Piazza dei Miracoli. We continue by bus to Venice where we will check-in to our hotel for dinner and overnight in Venice Mestre/Marcon.

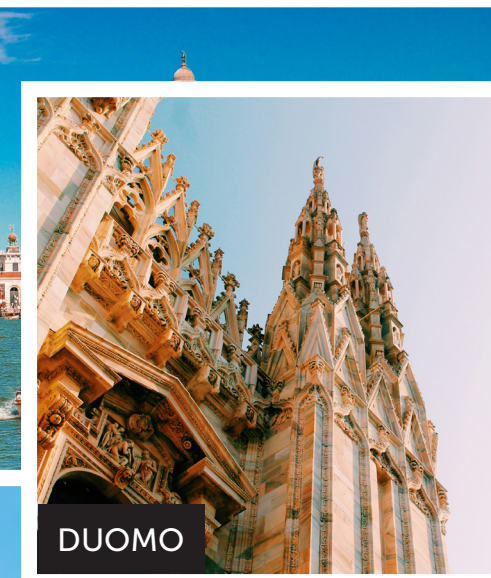
**Day 8 – Saturday, March 14: Charming Venice City Tour**  
After breakfast at the hotel, we transfer by bus from Mestre to Tronchetto then by vaporetto (public water bus) to reach St. Marco Square for a Venice city tour. Highlights of our walking guided tour (from the outside) are: St. Mark's Square and the Byzantine splendor of St. Mark's Basilica, lavish Doges' Palace, and the Bridge of Sighs. Then we will have free time to explore Venice on our own where you will have the option to join a gondola ride through the picturesque canal system or visit the many charming shops and take photos. In the afternoon, we transfer back to our hotel in Venice Mestre/ Marcon (vaporetto + bus). Dinner and overnight are in Venice Marcon.

**Day 9 – Sunday, March 15: Venice Mestre/Marcon, Departure, Arrive in U.S.A.**  
After breakfast at the hotel and check out, this morning we transfer to the airport for our flight home. We arrive back in the U.S. same day.

**Please note: visits, excursions, domestic flights time table, mentioned on the program might have slight changes in the time or in the program scale but without detracting any visit scheduled.**



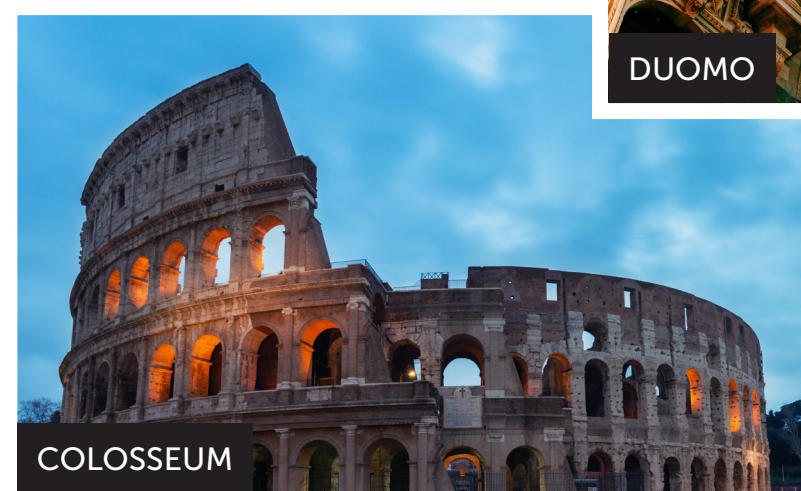
VENICE



DUOMO



ASSISI



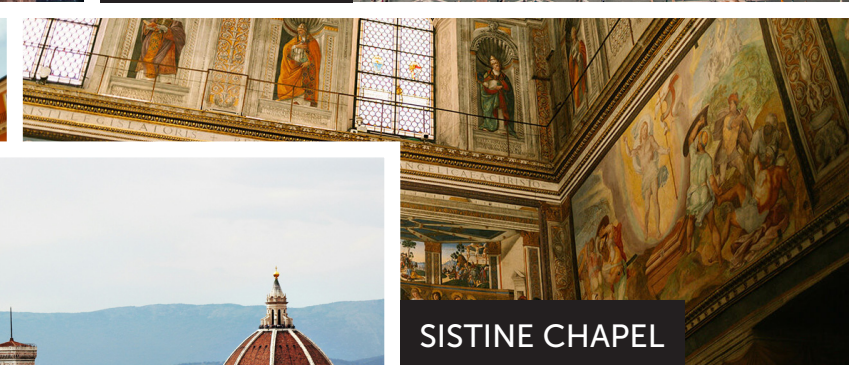
COLOSSEUM



VATICAN CITY



TREVI FOUNTAIN



SISTINE CHAPEL



FLORENCE



PIAZZA DEI MIRACOLI

Register **ONLINE:**  
[RegisterNow.ittworld.com](http://RegisterNow.ittworld.com)  
Tour Code: **Oakland26**

While we do our best to ensure that all items listed in your itinerary are included, there are times when conditions beyond our control may affect your program or itinerary, including but not limited to air carrier changes, delays, weather, political climate, time constraints, or changes made by your tour leader and tour guide.

Tour Activity Level:  
**Moderately Active**